

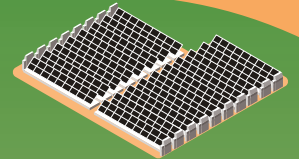
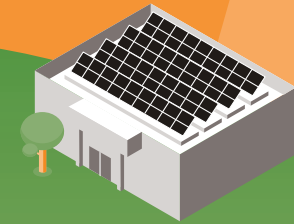
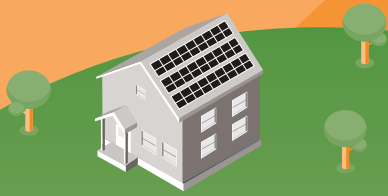
# STRONG POLICY SUPPORTS A THRIVING SOLAR INDUSTRY IN OREGON

## RESIDENTIAL

## COMMERCIAL

## COMMUNITY

## UTILITY



Residential solar increases awareness of daily energy usage as it offsets home energy load. Other benefits include:

- Reduces energy bills
- Increases freedom to choose energy source
- Supports local jobs
- When paired with battery storage, creates resilience from natural disasters

Commercial solar hedges against electricity price volatility and inflation. Other benefits include:

- Improves brand recognition and shows commitment to a sustainable future
- Employee pride and satisfaction
- Reduces costs plus benefits listed in residential solar

Community solar enables access to solar generation for customers unable to install solar due to property ownership or siting constraints. Other benefits include:

- Ensures equitable opportunity for participation across customer type
- Requires 10% of program capacity to serve low-income customers

Utility solar is critical for reaching economies of scale and providing low cost solar power. Other benefits include:

- Faster impact on carbon reduction from more MegaWatt's installed
- When paired with battery storage, adds value to the grid
- Dual Use projects integrate solar energy and sustainable agriculture

**Rebates encourage investment in solar and battery storage**

**Enforce the 1.5% set aside for green energy on public buildings**

**Community solar needs to be accessible to all Oregonians, not just IOUs**

**Land use policy needs to protect farms and encourage renewable energy**

## STRONG LEGISLATIVE SUPPORT IS NEEDED

Legislative support is required to achieve Governor Brown's Oregon Climate Agenda, Oregon's Renewable Portfolio Standard of 50% and a thriving solar industry. It is estimated that Oregon can achieve over 10% of our energy mix from solar in the near future. Good solar policy will be a key factor in achieving a smooth transition to a clean energy future, a skilled and stable solar workforce, as well as grid and community resiliency in the face of natural disasters.

